

ME AC

6-8C-10C AC
8-10-12 AC

ITALIAN QUALITY SINCE 1920

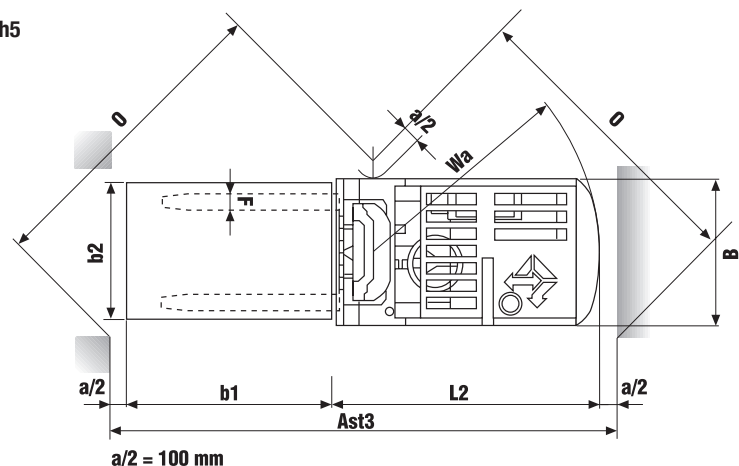
SPECIFICATION SHEET



SPECIFICATION SHEET				ME 6 AC	ME 8C AC	ME 10C AC
CHARACTERISTICS	1	Manufacturer	Abbreviated form	V.MARIOTTI S.r.l.	V.MARIOTTI S.r.l.	V.MARIOTTI S.r.l.
	2	Models	Manufacturer's model	ME 6 AC	ME 8C AC	ME 10C AC
	3	Capacity	Q Lifting load	600	800	1000
	4	At load center	C Distance	500	500	500
	5	Type of drive	Electric (Battery) - Diesel - Fuel gas	electric	electric	electric
	6	Type of steering	Driver standing - driver sitting - outside	driver sitting	driver sitting	driver sitting
	7	Tyres	V Cushion - SE Superel. front / rear	V / V	V / V	V / V
	8	Wheels	Quantity (♦ =driven) front / rear	2 / 1♦	2 / 1♦	2 / 1♦
DIMENSIONS	9	Lift	h3 Lift	2900	2900	2900
	10		h2 Normal free lift (see Mast details)	\	\	\
	11	Forks FEM 2A	Length(L) x Width(F) x Thickness(S)	800x80x30	800x80x30	800x80x30
	12	Tilt	Of the mast- forward (α) / backward (β)	2° 40' / 5°50'	2° 40' / 5°50'	2° 40' / 5°50'
	13		L2 Length at the fork backrest	1398*	1398*	1398*
	14		B Width	805	805	850
	15	Overall dimensions	h1 Height, mast collapsed	1908	1908	1908
	16		h4 Height, mast extended	3404	3404	3404
	17		h5 Height overhead guard	1890	1890	1890
	18		h6 Height seat from floor	850	850	850
	19	Turning radius	Wa	1177#	1177#	1177#
	20	Distance of load	X From centre front axle	221*	221*	221*
21	Width of aisle	O (b ¹ x b ²) 1200x800 - 1200x1000	1800/1860	1800/1860	1800/1860	
22		Ast 3 (b ¹ x b ²) 1200x800 - 1200x1000	2855 / 2885	2855 / 2885	2855 / 2885	
PERFORMANCES	23	Stability tests	Complying with EEC Directive 2006/42/EC	yes	yes	yes
	24	Speeds	Driving with /without load	7,5 / 7,8	7,5 / 7,8	7,2 / 7,8
	25		Lifting with /without load	0,240 / 0,298	0,220 / 0,298	0,210 / 0,298
	26		Lowering with /without load	0,39 / 0,35	0,40 / 0,35	0,43 / 0,35
	27	Draw- bar- pull	At the hook max with /without load	1500 / 1700	1400 / 1600	1300 / 1500
	28	Gradeability	with /without load	15 / 18	13 / 18	9 / 15
29	Max. with /without load		20 / 23	18 / 22	16 / 20	
WEIGHT	30	Weight	Truck, battery included	1300•	1490•	1990•
	31	Axle load	Without load front / rear	540 / 760	590 / 890	740 / 1250
	32		With load front / rear	1570 / 330	1910 / 380	2570 / 420
	CHASSIS	33	Wheels	Number front / rear	2 / 1	2 / 1
34		Wheels	Dimensions front	300x120x203	300x120x203	300x145x203
35			Dimensions rear	300x120x203	300x120x203	300x145x203
36		Wheel base	Y min. / max. (variable)	923 / 1005	923 / 1005	923 / 1005
37		Wheel track	Wheels centerline front	687	687	706
38		Ground clearance	M With load at the lowest point	60	60	60
39			M1 With load of wheel base	68	68	68
40		Brakes	Service (foot) brake	hydraulic	hydraulic	hydraulic
41			Hand parking brake	mechanical	mechanical	mechanical
DRIVE		42	Battery	Type	Traction	Traction
	43		Volt/Ah (capacity at 5 hours' discharge)	24/270 - 24/500	24/270 - 24/500	24/500
	44		Weight	265• - 400	265• - 400	400•
	45	Power steering	Hydraulic - electronically controlled	yes	yes	yes
	46	Electric motors	Hourly output of driving motor S2 60 min.	2	2	2
	47		Lifting motor, output S3 15%	3	3	3
	48	Traction Contr.	AC MOSFET	yes	yes	yes
	49	Pump control	Electronic by microprocessors	yes	yes	yes
	50	Working Press.	For additional attachments	90	140	165

with mast in vertical position * included side-shift Ast 3 = $Wa + \sqrt{(x + b^1)^2 + (b^2/2)^2} + a$

★ On demand installation of the flashlight inside the height of the overhead guard h5



Data showed are not binding and are liable to variations.
The constructor reserves the right of changes without notice.

a/2 = 100 mm

ME 8 AC	ME 10 AC	ME 12 AC
V.MARIOTTI S.r.l.	V.MARIOTTI S.r.l.	V.MARIOTTI S.r.l.
ME 8 AC	ME 10 AC	ME 12 AC
800	1000	1200
500	500	500
electric	electric	electric
driver sitting	driver sitting	driver sitting
V/V	V/V	V/V
2/1♦	2/1♦	2/1♦
3200	3200	3200
\	\	\
1000x100x35	1000x100x35	1000x100x35
2°40' / 5° 50'	2°40' / 5° 50'	2°40' / 5° 50'
1545*	1545*	1545*
860	860	890
2090	2090	2090
3720	3720	3720
1938	1938	1938
930	930	930
1313#	1313#	1313#
242*	242*	242*
1847/1902	1847/1902	1847/1902
3010/3040	3010/3040	3010/3040
yes	yes	yes
8,5/9,0	8,5/9,0	8,0/8,5
0,25/0,36	0,24/0,36	0,22/0,36
0,41/0,35	0,43/0,35	0,45/0,35
3200/3300	3100/3250	3100/3200
15/18	13/16	10/15
20/25	20/25	18/22
1770•	1900•	2150•
830/940	850/1050	870/1280
2140/430	2500/400	2890/460
2/1	2/1	2/1
330x127x203	330x127x203	330x152x203
330x127x203	330x127x203	330x152x203
1060/1143	1060/1143	1060/1143
736	736	741
80	80	80
92	92	92
hydraulic	hydraulic	hydraulic
mechanical	mechanical	mechanical
Traction	Traction	Traction
36/270 - 36/500	36/270 - 36/500	36/375 - 36/500
365• - 550	365• - 550	440• - 550
yes	yes	yes
3	3	3
4,5	4,5	4,5
yes	yes	yes
yes	yes	yes
115	140	185

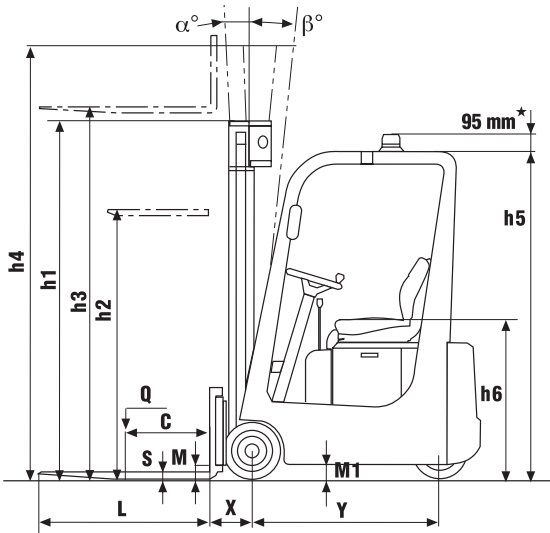
ME 6-8C-10C AC

- Voltage 24V
- Traction motor AC
- Electronic control of the lifting
- Tyres diameter 300x120(145)x203
- Power steering
- Masts from 2900 mm to 5700 mm
- Integrated sideshifter



ME 8-10-12 AC

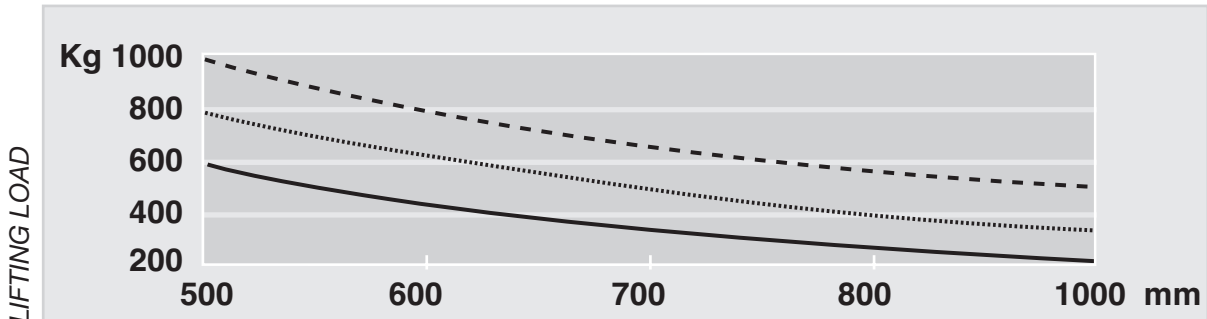
- Voltage 36V
- Traction motor AC
- Electronic control of the lifting
- Tyres diameter 330x127(152)x203
- Power steering
- Masts from 2900 mm to 5700 mm
- Integrated sideshifter



MAST DETAILS ME 6 - 8C - 10C AC

HEIGHT		STANDARD INCL. SIDE-SHIFT				DUPLEX GAL INCL. SIDE-SHIFT				TRIPLEX GAL INCL. SIDE-SHIFT		
Lifting	h3	2900	3200	3800	4200	2900	3200	3800	4200	4350	4800	5700
Height mast collapsed	h1	1908	2065	2365	2565	1908	2065	2365	2565	1908	2065	2365
Height mast extended	h4	3404	3708	4308	4708	3404	3708	4308	4708	4850	5305	6205
Free lift	h2	-	-	-	-	1479	1630	1930	2130	1479	1630	1930
Width ME 6 AC - ME 8C AC	B	805	805	870	870	805	805	870	870	870	870	905
Width ME 10C AC	B	850	850	915	915	850	850	915	915	915	915	950

— ME 6 AC ME 8C AC - - - - ME 10C AC

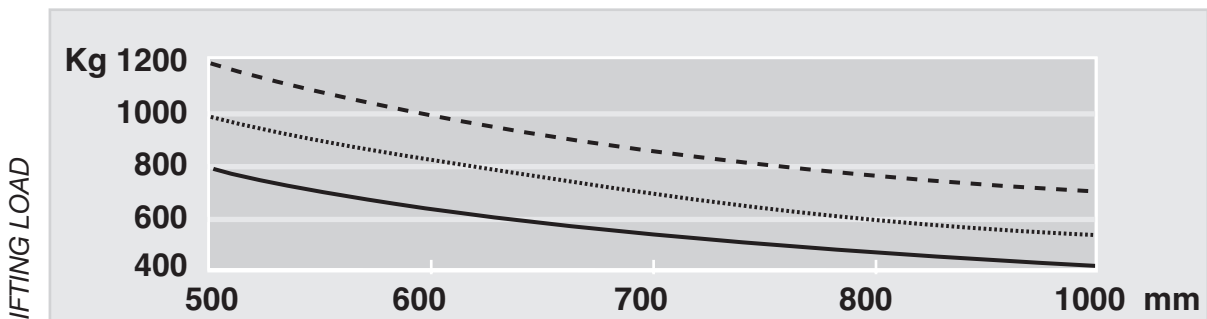


DISTANCE

MAST DETAILS ME 8 - 10 - 12 AC

HEIGHT		STANDARD INCL. SIDE-SHIFT				DUPLEX GAL INCL. SIDE-SHIFT				TRIPLEX GAL INCL. SIDE-SHIFT		
Lifting	h3	2900	3200	3800	4200	2900	3200	3800	4200	4350	4800	5700
Height mast collapsed	h1	1935	2090	2390	2590	1935	2090	2390	2590	1935	2090	2390
Height mast extended	h4	3415	3720	4320	4720	3415	3720	4320	4720	4857	5313	6213
Free lift	h2	-	-	-	-	1480	1634	1935	2134	1480	1634	1935
Width ME 8 AC - ME 10 AC	B	860	860	860	920	860	860	860	920	920	920	960
Width ME 12 AC	B	890	890	890	950	890	890	890	950	950	950	990

— ME 8 AC ME 10 AC - - - - ME 12 AC



DISTANCE